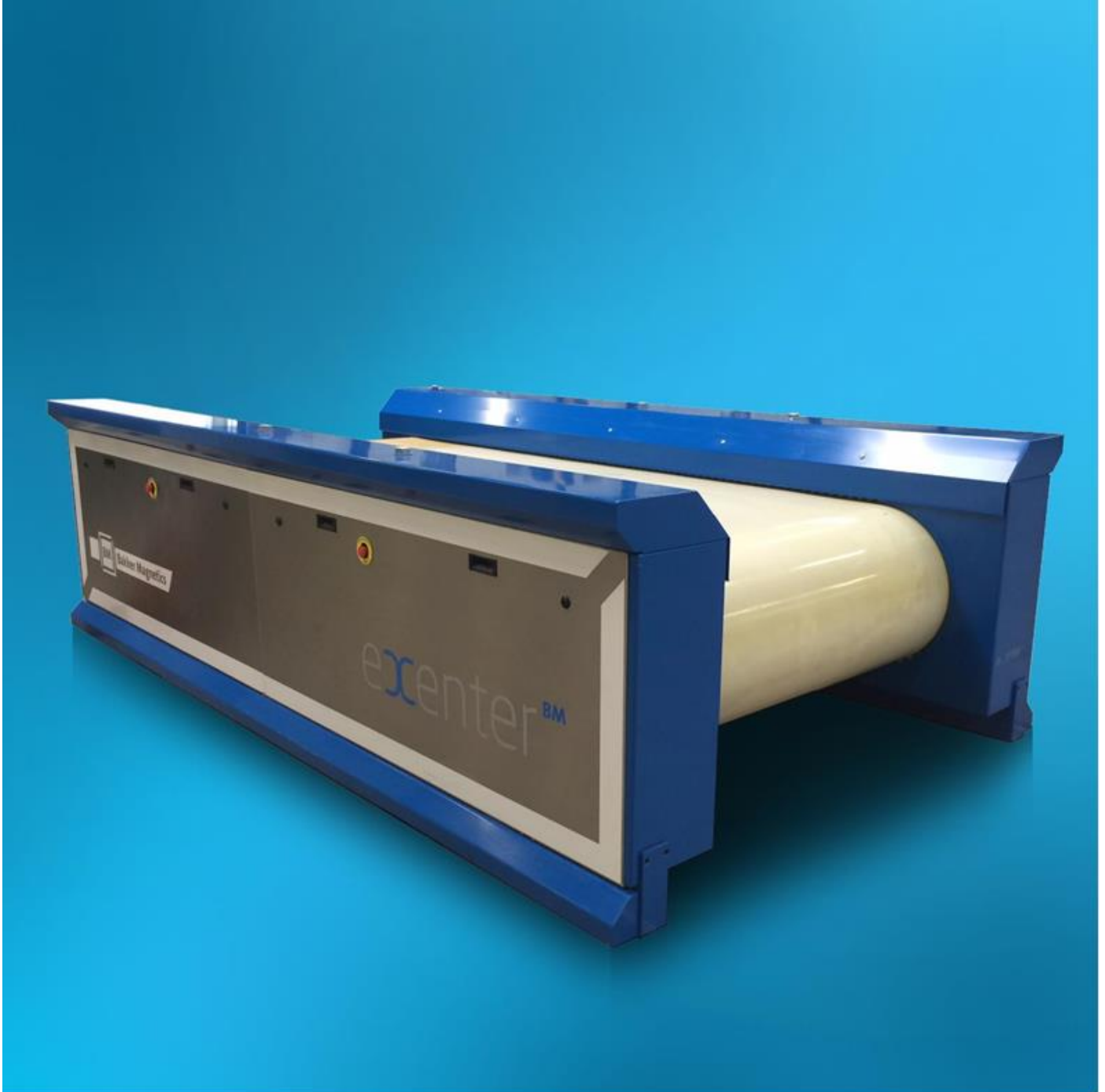




Bakker Magnetics – BM..X Eccentric Eddy Current Separator





BM12X / BM36X Eccentric Eddy Current Separators

- Execution : Eccentric nonferrous separator type BM..X
Sturdy construction
Modular design
Including separation unit
Including control cabinet
- Driving drum : Ø 295mm, crowned
Powered by 4kW SEW engine
- Magnetic rotor : Ø 460mm, cylindrical
Powered by 7,5kW SEW engine
Powered by 9,2kW SEW engine (2000mm Version)
Built up with strong neodymium magnets;
quality BM35 (optional BM50 Magnets)
- Surface treatment : Anti-corrosion primer
Painted blue RAL 5015
Stainless steel parts untreated
- Placement : Protected / covered environment
Environment temperature +15°C - 40°C
Relative humidity max. 85%
Free from dust

Conform CE label; with certificate.

Bakker Magnetics supplies a complete installation and user manual in English.

- A-brand bearings applied.
- Equipped with a 12 (BM12X) or 18 (BM36X) poles high speed eccentric magnetic rotor
- Adjustable belt speed; 0,5 - 3 m/s.
- Adjustable rotor speed;
BM..X: 500 - 3.000 rpm (2.000mm max 2.500 rpm).
- Wear resistant PU belt, equipped with 2 side guards.
Optional rubber belt, equipped with 2 side guards.
- Self-adjusting belt track including 2 misalignment switches.
- Manually adjustable belt tension.
- Vibration sensor mounted on the frame to detect unbalance, when detected the system switches off.
- Easy access for quick and easy maintenance.
- Radius-shaped magnets to realise the smallest possible air gap.

Control Cabinet (standard with Eddy Current machine)

- Size 1.200 x 1.000 x 300mm (H x W x D)
- Input 3x 400V, 50Hz + PE
Through CEE 64 Amp connector
- Main switch 3 phase 64 ampere
- Bosch frequency converter(s) for magnetic rotor and drive drum
- 2 Additional thermal overload switches, suitable for 1,2 and 5,5 kW engines
(1x 1,6-2,5 ampere (1.2kW motor) and 1x 11-16 ampere (5.5kWmotor))
- Equipped with Siemens PLC
- Equipped with touch panel for local operation

Vibrating feeder (optional)

- Execution Unbalance vibrating feeder
Sturdy construction
Modular design
- Trough Made from stainless steel
Placed on Rosta elements
Available lengths 1500mm and 2500mm
- Drive Adjustable unbalance engines
Motor brand Italvibras
- Power Power for 1500mm length versions;

BM..X 800mm	2x 0,5kW
BM..X 1000mm	2x0,7kW
BM..X 1500mm	2x0,75kW
BM..X 2000mm	2x1,30kW
- Surface treatment Anti-corrosion primer
Stainless steel parts blasted
Steel parts painted RAL 5015

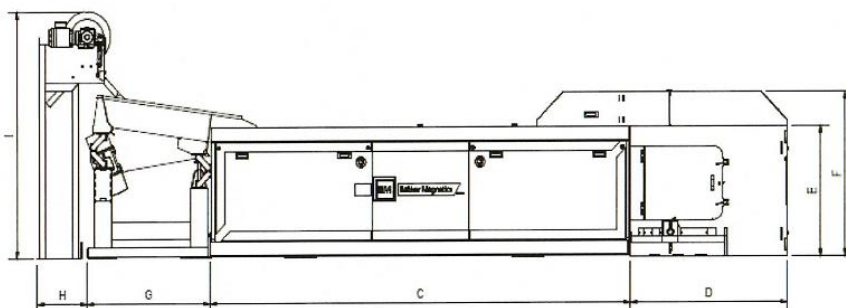
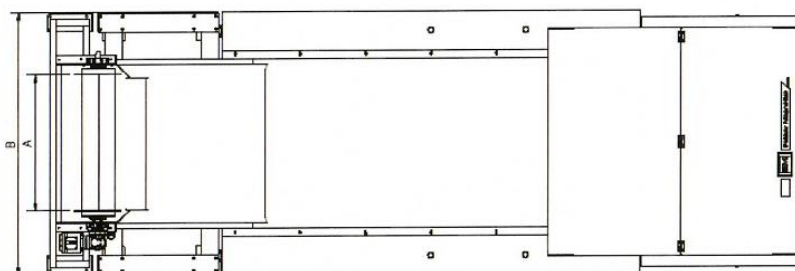
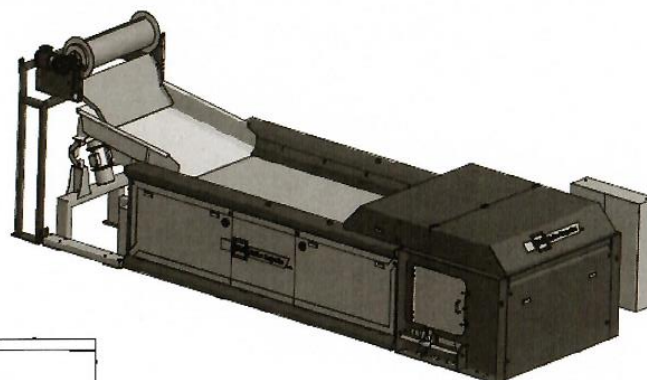
Neodymium separating drum (optional)

- Execution Separating drum type TM mounted on a frame
Sturdy construction
Modular design
Permanent magnetic
- Drum Ø 315mm, stainless steel 1.4301, with 2 idlers
- Surface treatment Untreated
- Magnetic part Magnetic area approx. 180°
Permanent Neodymium magnets quality BM35

Standard version (BM..X)

Article number	A	B	C	D	E	F	G	H	I
29.743 /...	800	1610	3000/4000	1135	1500	1462	1175	480	2175
29.744 /...	1000	1810	3000/4000	1135	1500	1462	1175	480	2175
29.746 /...	1500	2310	3000/4000	1135	1500	1462	1175	480	2175
29.747 /...	2000	2810	3000/4000	1135	1500	1462	1175	480	2175

Sized mentioned based on a feeder length of 1500mm



For more information on this product range, contact us on Tel: **01525 372714** Email: Sales@LHS.uk.com Web: <http://www.LHS.uk.com>