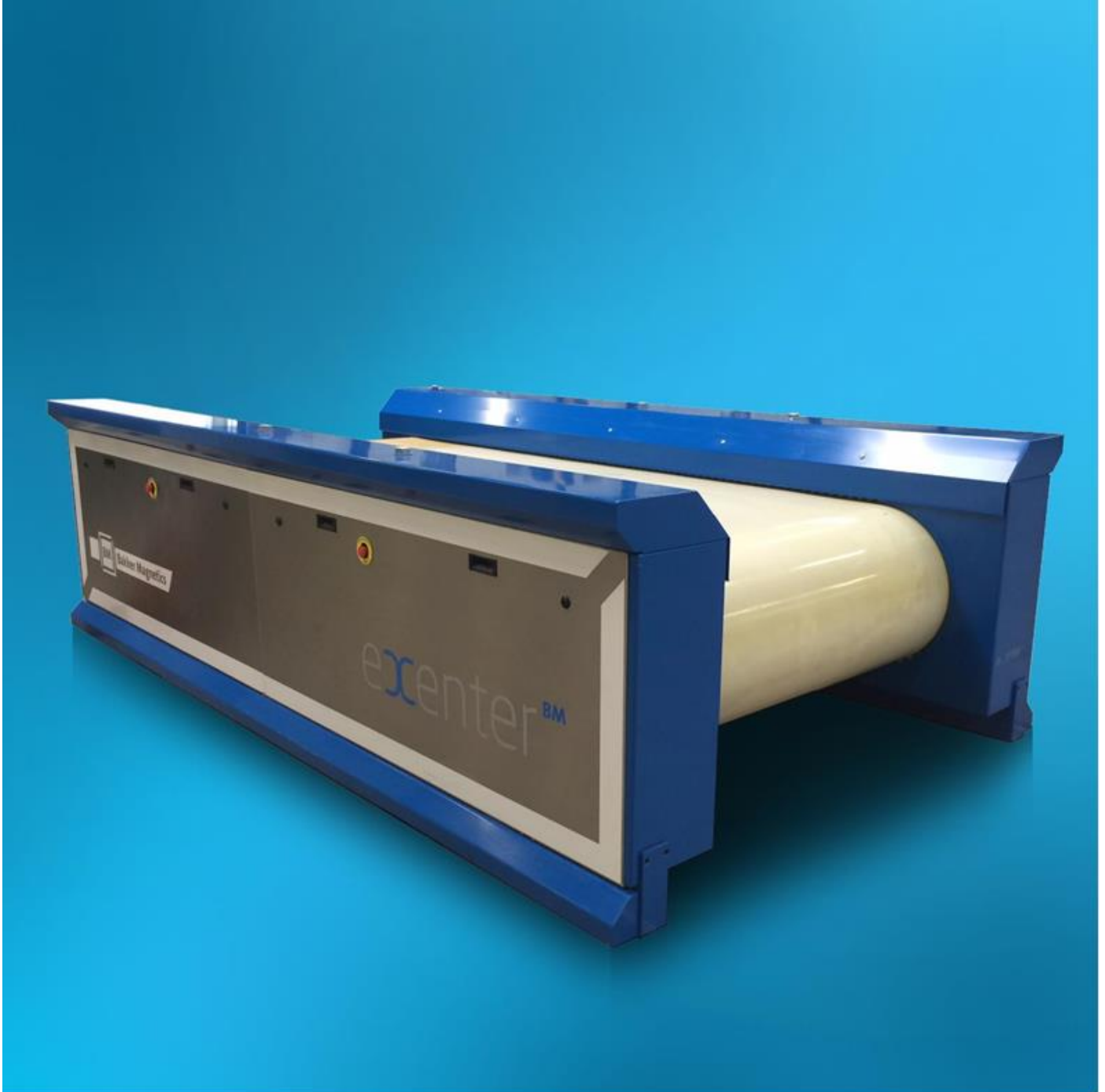




Bakker Magnetics – BM104X Eccentric Eddy Current Separator



- Execution : Eccentric nonferrous separator type BM104X
Sturdy construction
Modular design
Including separation unit
Including control cabinet (400V / 50Hz)
- Driving drum : Ø 300mm, crowned
Powered by 4kW SEW engine
- Magnetic rotor : Ø 610mm, cylindrical
Powered by 9,2kW SEW engine
Built up with strong neodymium magnets;
quality BM52 (BM104X)
- Surface treatment : Anti-corrosion primer
Painted blue RAL 5015
Stainless steel parts untreated
- Placement : Protected / covered environment
Environment temperature -15°C to 40°C
Relative humidity max. 85%
Free from dust

Conform CE label; with certificate.

Bakker Magnetics supplies a complete installation and user manual in English.

- Only first class bearings applied.
- Adjustable belt speed; 0,5 - 3 m/s.
- Equipped with a high speed eccentric magnetic rotor, generating 52 pole changes each rotation.
- Adjustable rotor speed;
BM104X: 500 - 3.600 rpm (2.000mm max 3.200 rpm).
- Operating at a speed of 3.600rpm the BM104X rotor generates a field frequency of 1.56kHz.
- Wear resistant PU belt, equipped with 2 side guards.
Optional rubber belt, equipped with 2 side guards.
- Self-adjusting belt track including 2 misalignment switches.
- Manually adjustable belt tension.
- Vibration sensor mounted on the frame to detect unbalance, when detected the system switches off.
- Easy access for quick and easy maintenance.
- Radius-shaped magnets to realise the smallest possible air gap.

Control Cabinet (standard with Eddy Current machine)

- Size 1.200 x 1.000 x 300mm (H x W x D)
- Input 3x 400V, 50Hz + PE
Through CEE 64 Amp connector
- Main switch 3 phase 64 ampere
- Bosch frequency converter(s) for magnetic rotor and drive drum
- 2 Additional thermal overload switches, suitable for 1,2 and 5,5 kW engines
(1x 1,6-2,5 ampere (1.2kW motor) and 1x 11-16 ampere (5.5kWmotor))
- Equipped with Siemens PLC
- Equipped with touch panel for local operation

Vibrating feeder (optional)

- Execution Unbalance vibrating feeder
Sturdy construction
Modular design
Suitable for BM104X Eddy Current machines
- Trough Made from stainless steel
Placed on Rosta elements
Available lengths 1500mm and 2500mm
- Drive Adjustable unbalance engines
- Power Power for 1500mm length versions;

| | |
|--------------|-----------|
| BM..X 800mm | 2x 0,35kW |
| BM..X 1000mm | 2x0,35kW |
| BM..X 1500mm | 2x0,75kW |
| BM..X 2000mm | 2x1,30kW |
- Surface treatment Anti-corrosion primer
Stainless steel parts blasted
Steel parts painted RAL 5015

Neodymium separating drum (optional)

- Execution Separating drum type TM mounted on a frame
Sturdy construction
Modular design
Permanent magnetic
Suitable for BM..X Eddy Current machines
- Drum Ø 315mm, stainless steel 1.4301, with 2 idlers
- Surface treatment Untreated
- Magnetic part Magnetic area approx. 180°
Permanent Neodymium magnets quality BM35

Standard version (BM104X)

| Article number | A | B | C | D | E | F | G | H | I |
|----------------|------|------|------|------|------|------|------|-----|------|
| 29.733 /... | 800 | 1610 | 4020 | 1500 | 1135 | 1462 | 1175 | 480 | 2175 |
| 29.734 /... | 1000 | 1810 | 4020 | 1500 | 1135 | 1462 | 1175 | 480 | 2175 |
| 29.736 /... | 1500 | 2310 | 4020 | 1500 | 1135 | 1462 | 1175 | 480 | 2175 |
| 29.737 /... | 2000 | 2810 | 4020 | 1500 | 1135 | 1462 | 1175 | 480 | 2175 |

Sized mentioned based on a feeder length of 1500mm

For more information on this product range, contact us on Tel: **01525 372714** Email: Sales@LHS.uk.com Web: <http://www.LHS.uk.com>