

Alustar Radial Pole Magnetic Chuck

Intended use:

Aluminium body with unique worm gear actuating mechanism. The Aluminium body significantly reduces the weight of the chuck.

This chuck is ideal for grinding / turning of ring shaped components.

For repetitive work additional top plates can be purchased

Features:

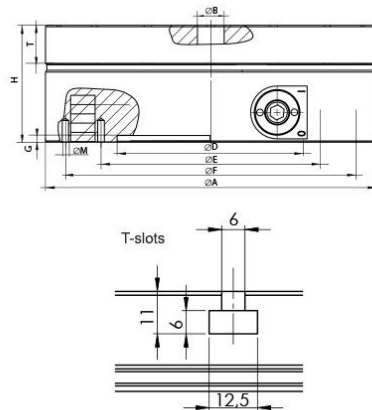
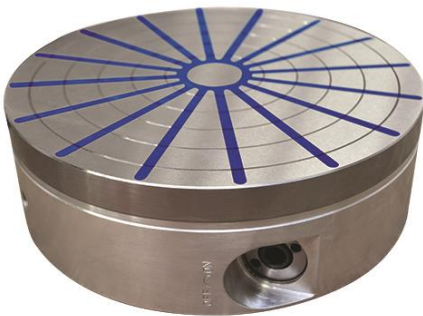
- Robust single piece top plate with radial poles and epoxy resin gaps.
- Double, high energy Neodymium magnetic system
- Solid aluminium body with worm gear actuating mechanism, unique, very safe, self-locking mechanism – preventing switching off during machining.
- Neodymium magnets provide high holding force 140 N/cm²

Applications:

- Designed to hold ring shaped components

Set up procedure:

1. Switch ON up to 10-20% power
2. Workpiece centring
3. Switch ON up to 100% power
4. Workpiece machining



Mounting chuck on the table:

The base has a recess on the bottom side with threaded holes for mounting a suitable flange.

Optional:

- Exact centring hole
- Additional pole plate
- Pole plate with T-slot
- Set of pole shoes

Available sizes:

Code	A (mm)	B (mm)	D (mm)	E (mm)	F (mm)	G (mm)	H (mm)	M (mm)	T (mm)	Number of poles	Weight (kg)
ALUS20D200	200	20	60	110	180	5	79	M6	20	12	11.5
ALUS20D250	250	30	80	166	220	5	79	M6	20	12	18
ALUS20D300	300	38	150	180	260	6	82	M8	20	16	27
ALUS20D350	350	40	170	220	300	6	84	M8	20	16	36
ALUS20D400	400	40	200	260	340	8	84	M8	20	16	47
ALUS30D500	500	50	200	330	400	8	109	M8	30	16	98
ALUS30D600	600	90	250	350	450	8	109	M10	30	20	142

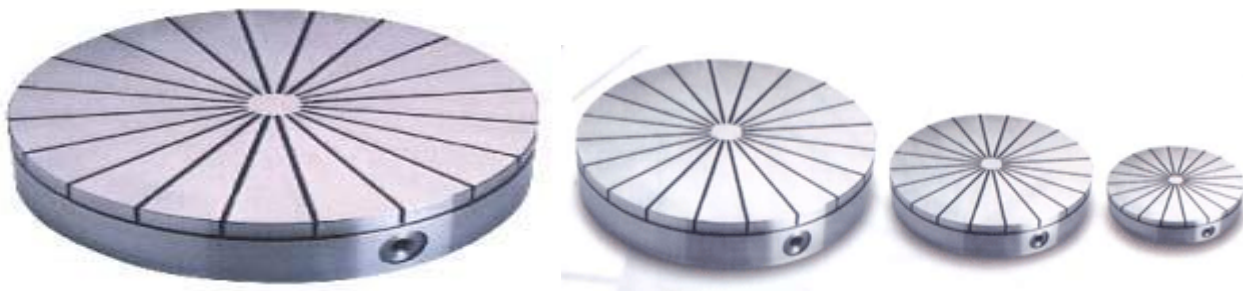
Auxiliary Top Plates

Intended Use:

- Holding and positioning of workpieces with irregular contact surfaces
- Machining up to 70% of top plate thickness

Features:

- Fixation on magnet according to requirement or done by yourself
- Custom engineered executions available



For more information on our products contact us on Tel: 01525 372714 Email: Sales@LHS.uk.com or Website: <http://www.LHS.uk.com>