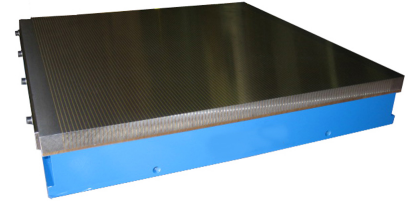


10.25 Fine poles electro-permanent magnetic chuck type

EPEFINE

Fine pole pitch/ p=5 mm

Stabil top plate, Waterproof construction, Longer life



Applications

Grinding , EDM

Construction

. Steel and brass laminated top plate . Uniform and strong magnetic field . Rugged construction . Maximum effective clamping area . Guaranteed waterproof . End stop rails and 3 meters cable

Pole pitch 5 mm

Nominal force 110 N/cm²

Admissible wear of top plate 8 mm

Voltage 340 VDC

Art.-N°10.25

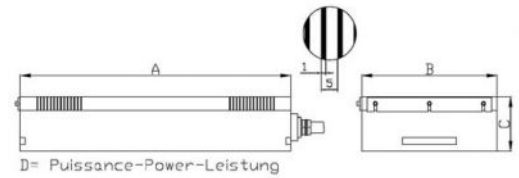
Diagram below: dimensions in mm

| Product | Weight | A | B | C | D |
|---------------|--------|------|-----|----|-----|
| 10.25.300150 | 25 | 300 | 150 | 80 | 30A |
| 10.25.450150 | 35 | 450 | 150 | 80 | 30A |
| 10.25.500200 | 60 | 500 | 200 | 80 | 30A |
| 10.25.600200 | 75 | 600 | 200 | 80 | 30A |
| 10.25.600250 | 97 | 600 | 250 | 80 | 30A |
| 10.25.700250 | 120 | 700 | 250 | 80 | 30A |
| 10.25.1000250 | 165 | 1000 | 250 | 80 | 30A |
| 10.25.500300 | 84 | 500 | 300 | 80 | 30A |
| 10.25.600300 | 115 | 600 | 300 | 80 | 30A |
| 10.25.700300 | 147 | 700 | 300 | 80 | 30A |
| 10.25.900300 | 160 | 900 | 300 | 80 | 30A |
| 10.25.1000300 | 170 | 1000 | 300 | 80 | 30A |
| 10.25.1200300 | 202 | 1200 | 300 | 80 | 30A |
| 10.25.1500300 | 252 | 1500 | 300 | 80 | 30A |
| 10.25.600400 | 134 | 600 | 400 | 80 | 30A |
| 10.25.800400 | 180 | 800 | 400 | 80 | 30A |
| 10.25.1000400 | 225 | 1000 | 400 | 80 | 30A |
| 10.25.1200400 | 270 | 1200 | 400 | 80 | 30A |
| 10.25.800500 | 225 | 800 | 500 | 80 | 30A |

OPTIONS :

For use with BRAILLON MAGNETICS unit control
model BUP (with automatic demagnetization cycle)

Other dimensions on request



All right reserved to change construction and dimensions without notice - Print date : 18/11/2010